

3D VIEW

NOTE:

1.MATERIAL:

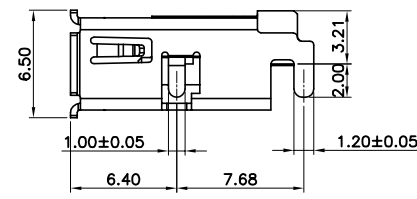
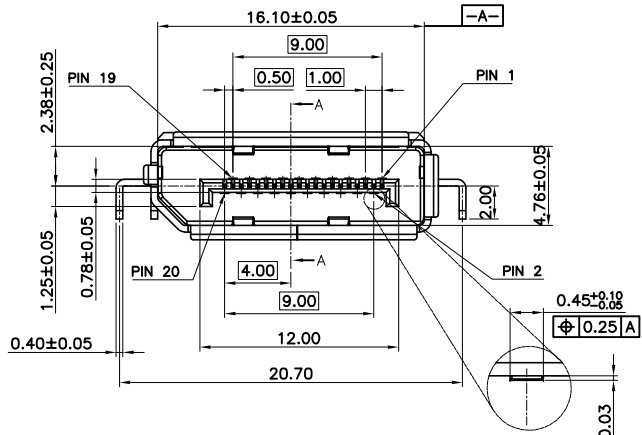
- 1-1 HOUSING: LCP E130I UL94V-0, COLOR: BLACK
- 1-2 CONTACT: COPPER ALLOY C2680-H, T=0.20±0.01mm
- 1-3 SHELL: STEEL ALLOY SUS304-1/2H, T=0.40±0.01mm
- 1-4 MYLAR: PI.

2.PLATING:

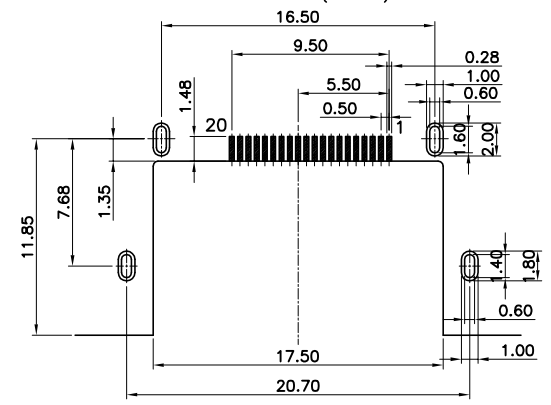
- 2-1 TERMINAL: GOLD PLATED(SEE TABLE) ON CONTACT AREA AND 2.54μm [100μ"] MIN. MATTE-TIN ON SOLDER TAIL, WITH ENTIRE CONTACT UNDERPLATED 1.27μm [50μ"] MIN.NICKEL.
- 2-2 SHELL:1.27μm [50μ"] MIN. NICKEL PLATED.

3.ELECTRICAL PERFORMANCE:

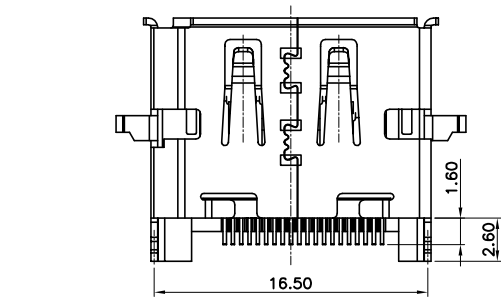
- 3-1 CONTACT RESISTANCE:INITIAL CONTACT RESISTANCE EXCLUDING CONDUCTOR RESISTANCE:10 MILLIOHMS MAX.
- 3-2 DIELECTRIC STRENGTH:UNMATED CONNECTORS APPLY 500V AC MATED CONNECTOR APPLY 300V AC
- 3-3 INSULATION RESISTANCE:100 MEGAOHMS MIN.(UNMATED) 10 MEGAOHMS MIN.(MATED)



SECTION A-A



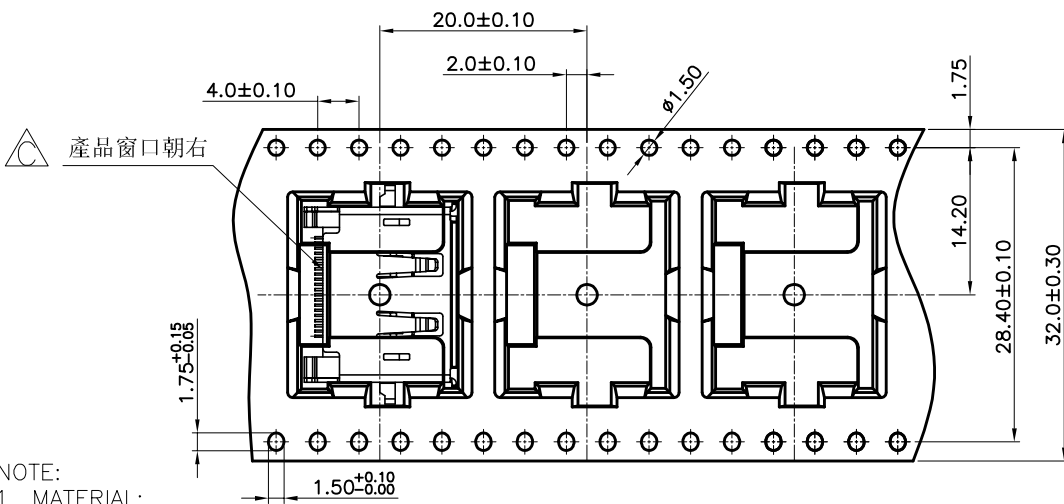
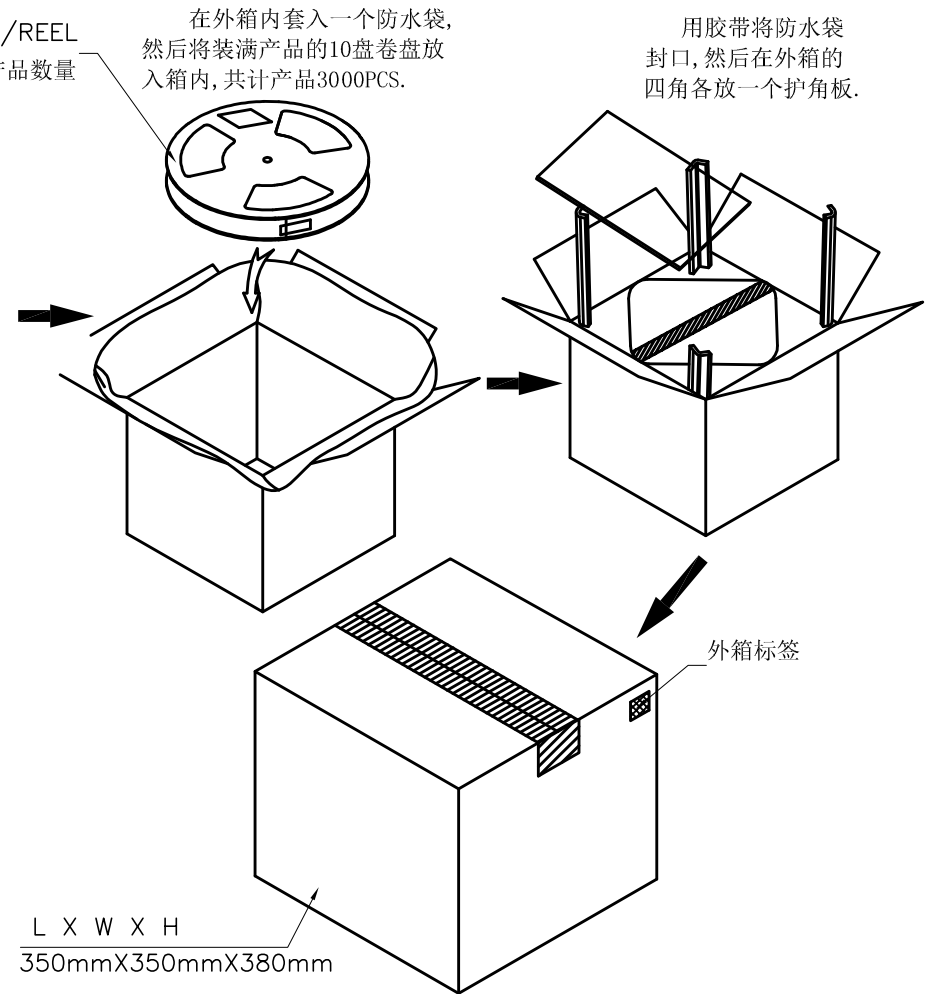
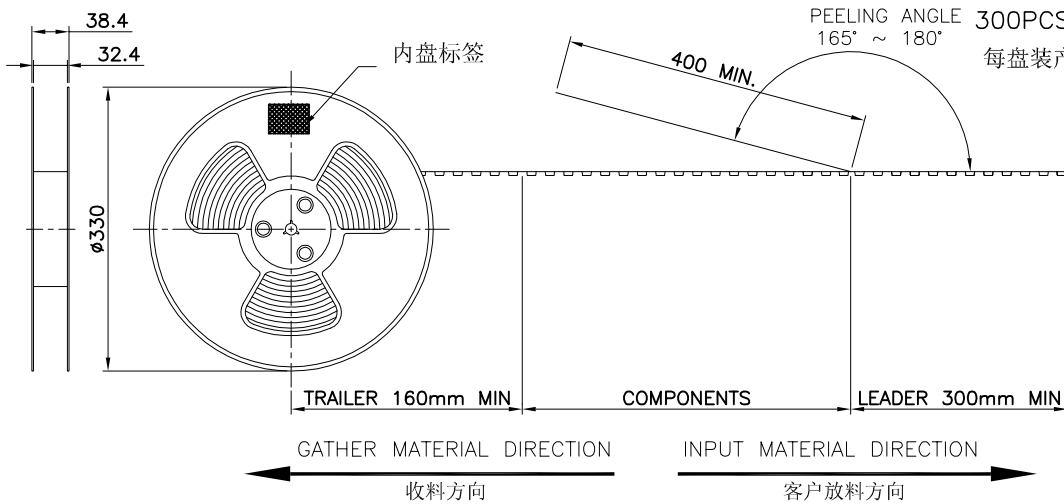
RECOMMENDED PCB LAYOUT(TOP VIEW)
(DEFAULT DIMENSION TOL=±0.05mm)
(THICKNESS=1.2±0.10mm)



RoHS2+HF	30u"	22-D0590-6A03-0
	15u"	22-D0590-5A03-0
	10u"	22-D0590-3A03-0
	5u"	22-D0590-2A03-0
	G/F	22-D0590-1A03-0
GP TYPE	MIN. GOLD THICKNESS	PART NUMBER

REV.	DESCRIPTION	ECN NO.	DWN.	CHK.	APVD.	DATE
C	MODIFY PACKING DIRECTION	N1709407	Xinye			09-11'17
B	ADD DIMENSION	N1708376	Xinye	Jimmy	Kevin	08-24'17
A	FIRST RELEASED	--	Xinye	Jimmy	Kevin	07-04'17

TOLERANCES UNLESS OTHERWISE SPECIFIED		TITLE		UNIT
X.	±0.50	Display Port 20P		mm
X.X	±0.30	H=3.21mm CH=0mm,REC,STD,SMT TYPE		
X.XX	±0.20	ORIGINAL DATA		
X.XXX	±0.15	07-04'17		
ANGEL ±3°				
MATERIAL		PART NO.	SCALE	SIZE
SEE NOTES		SEE TABLE	1:1	A3
FINISH		CHK.	DWG. NO.	REV.
SEE NOTES		Jimmy	C-22-D059X	C
		APVD.		SHEET
		Kevin		1 OF 2



- NOTE:
- MATERIAL:
 BOX: FIBREBOARD, CORRUGATED, DOUBLE WALL.
 TAPE: POLYSTYRENES, WHITE COLOR.
 REEL: POLYSTYRENES, BLUE COLOR.
 BAG: POLYETHYLENE.
 - PEELING STRENGTH: 0.1 ~ 1.3 N (10 ~ 130 GRAMS)
 - PEELING SPEED: 300 mm/min.
 - EACH BAG SHALL BE INCLUDED DESICCANT.

300	10	3000 PCS	-- KG	-- KG
PCS/REEL	Reel/BOX	QUANTITY	GROSS WEIGHT	NET WEIGHT

						TOLERANCES UNLESS OTHERWISE SPECIFIED	TITLE	UNIT		
						X. ±0.50	H=3.21mm	mm		
						X.X ±0.30	Display Port 20P			
						X.XX ±0.20	CH=0mm,REC,STD,SMT TYPE			
						X.XXX ±0.15	07-04'17			
						ANGEL ±3°	tconn precision			
C	MODIFY PACKING DIRECTION	N1709407	Xinye		09-11'17	MATERIAL	PART NO.	SCALE	SIZE	REV.
B	ADD DIMENSION	N1708376	Xinye	Jimmy	Kevin	SEE NOTES	SEE TABLE	1:1	A3	C
A	FIRST RELEASED	--	Xinye	Jimmy	Kevin	FINISH	DWG. NO.			SHEET
REV.	DESCRIPTION	ECN NO.	DWN.	CHK.	APVD.	DATE	C-22-D059X			2 OF 2