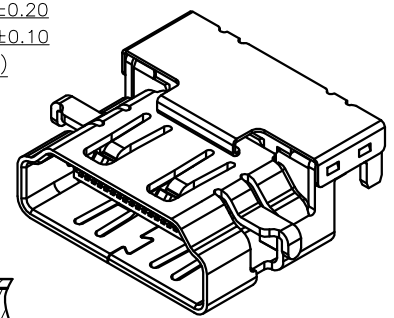
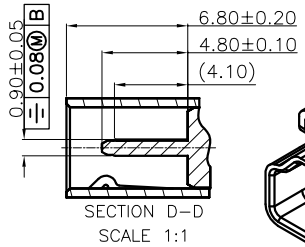


CONTACTS:GOLD
CONTACTS PLATING: G/F~30u"
SOLDER TAIL PLATING: MATTE TIN
SHELL:NICKEL 50u"MIN

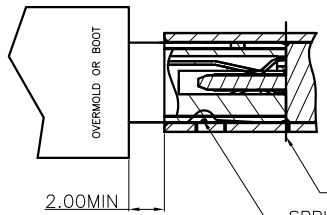
- NOTES:
- MATERIAL:
 - HOUSING:LCP E130i WITH 30% G/F UL 94V-0 COLOR:BLACK.
 - COVER:LCP E130i WITH 30% G/F UL 94V-0 COLOR:BLACK.
 - TERMINAL:BRASS C2680 T=0.20mm
 - SHELL:STAINLESS STEEL 304 T=0.50mm
 - TOP SHELL:STAINLESS STEEL 304 T=0.20mm
 - PLATING:
 - TERMINAL:
 - SEE TABLE GOLD PLATED ON CONTACT AREA AND 2.54μm [100μ"] MIN. MATTE-TIN ON SOLDER TAIL, WITH ENTIRE CONTACT UNDERPLATED 1.27μm [50μ"] MIN.NICKEL.
 - SHELL:1.27μm [50μ"] MIN. NICKEL OR BLACK NICKEL PLATED.
 - TOP SHELL:1.27μm [50μ"] MIN. NICKEL OR BLACK NICKEL PLATED.
 - ELECTRICAL PERFORMANCE:
 - CONTACT RESISTANCE:INITIAL CONTACT RESISTANCE EXCLUDING CONDUCTOR RESISTANCE:10 MILLIOHMS MAX.
 - DIELECTRIC STRENGTH:UNMATED CONNECTORS APPLY 500V AC MATED CONNECTOR APPLY 300V AC
 - INSULATION RESISTANCE:100 MEGAOHMS MIN.(UNMATED) 10 MEGAOHMS MIN.(MATED)
 - MECHANICAL CHARACTERISTICS:
 - INSERTION FORCE:4.5Kgf MAX.
 - WITHDRAWAL FORCE:1.0-4.0Kgf
 - LIFE TEST:10000 CYCLES
 - SALT SPRAY TEST: REACH 48H.



3D VIEW

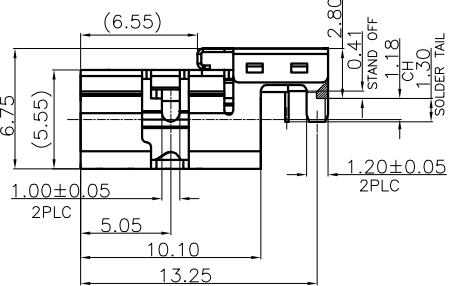


SECTION D-D
SCALE 1:1

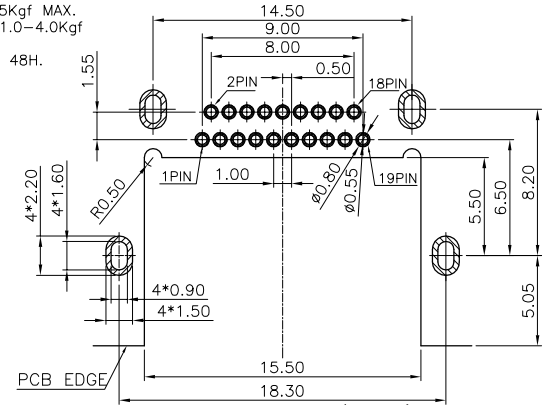


OVERMOLD OR BOOT

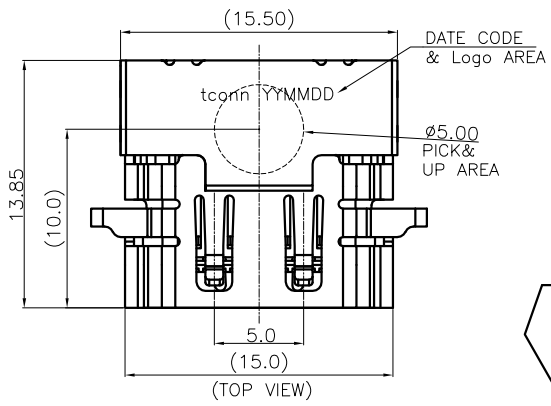
FULLY MATED RECEPTACLE AND PLUG
SPRING PROPERTY FOR LOCKING



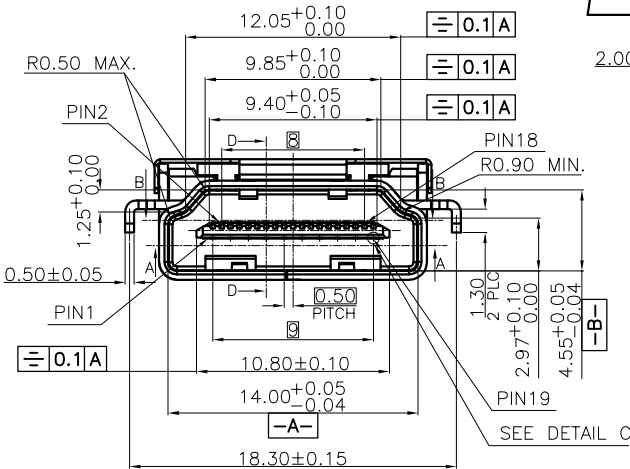
SECTION B-B
SCALE 1:1



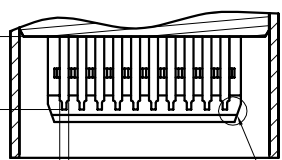
RECOMMENDED PCB LAYOUT (TOP VIEW)
(THICKNESS=1.00±0.05mm)
(TOLERANCE=±0.05mm)



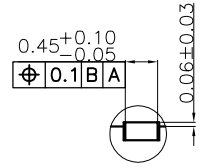
(TOP VIEW)



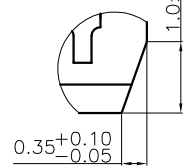
SEE DETAIL C



SECTION A-A
SCALE 1:1



DETAIL C
SCALE 4:1

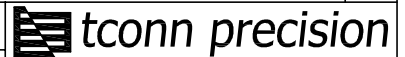


DETAIL F
SCALE 4:1

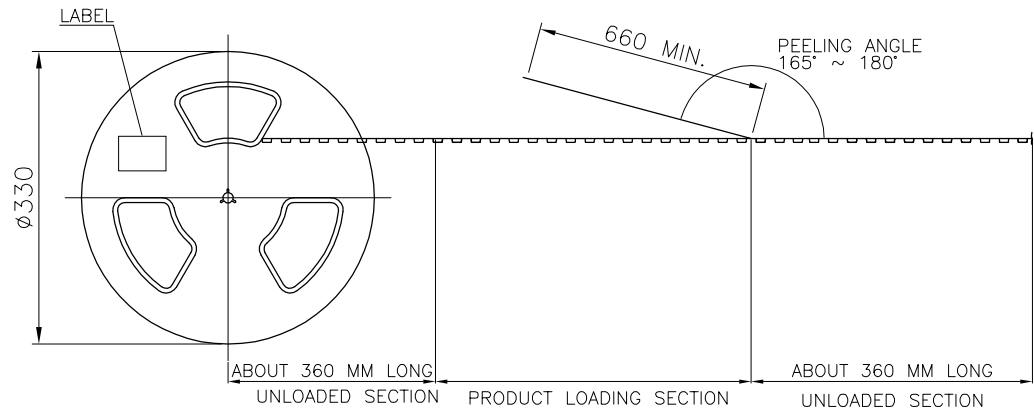
GP TYPE	PACKING DRAWING	SHELL PLATING	MIN. GOLD THICKNESS	PART NUMBER
RoHS2+HF	SEE SHEET 3 OF 3	NICKEL	30u"	16-A1902-6A03-0
			15u"	16-A1902-5A03-0
			10u"	16-A1902-3A03-0
			5u"	16-A1902-2A03-0
			G/F	16-A1902-1A03-0
			30u"	16-A1901-6A03-0
		15u"	16-A1901-5A03-0	
		10u"	16-A1901-3A03-0	
		5u"	16-A1901-2A03-0	
		G/F	16-A1901-1A03-0	
		NICKEL	30u"	16-A1900-6A03-0
			15u"	16-A1900-5A03-0
10u"	16-A1900-3A03-0			
5u"	16-A1900-2A03-0			
G/F	16-A1900-1A03-0			
30u"	16-A1900-6A03-0			
BLACK NICKEL	15u"	16-A1900-5A03-0		
	10u"	16-A1900-3A03-0		
	5u"	16-A1900-2A03-0		
	G/F	16-A1900-1A03-0		
	30u"	16-A1900-6A03-0		
	15u"	16-A1900-5A03-0		

REV.	DESCRIPTION	ECN NO.	DWN.	CHK.	APVD.	DATE
03	ADD PACKING P/N	N1801049	Xianpei			02-01'18
02	MODIFY NOTES	N1701025	Hongrui	Jimmy	Kevin	01-17'17
01	FRIST RELEASED	--	Hongrui	Jimmy	Kevin	07-16'16

TOLERANCES UNLESS OTHERWISE SPECIFIED		TITLE		UNIT
X.	±0.50	HDMI A REVERSE TYPE 19P H=6.75mm		mm
X.X	±0.30	CH=-1.18mm REC,DIP TYPE(BDC-39)		
X.XX	±0.20	ORIGINAL DATA		
X.XXX	±0.15	07-16'16		
ANGEL	±3°	DWN. Hongrui		
MATERIAL		CHK. Jimmy		
FINISH		APVD. Kevin		
		PART NO.	SCALE	SIZE
		SEE TABLE	1 : 1	A3
		DWG. NO.	SHEET	
		C-16-A190X	1 OF 3	

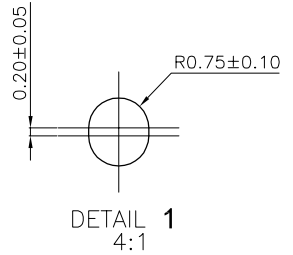
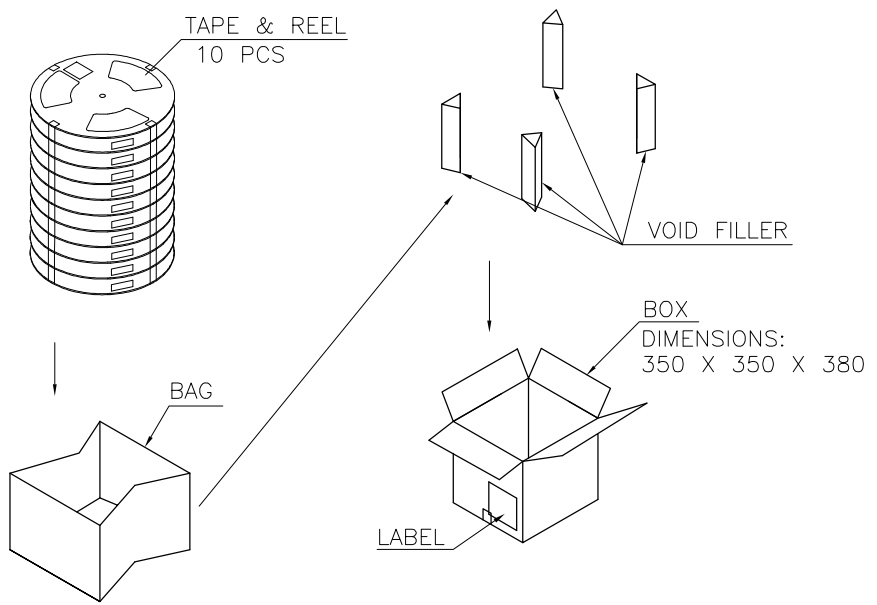
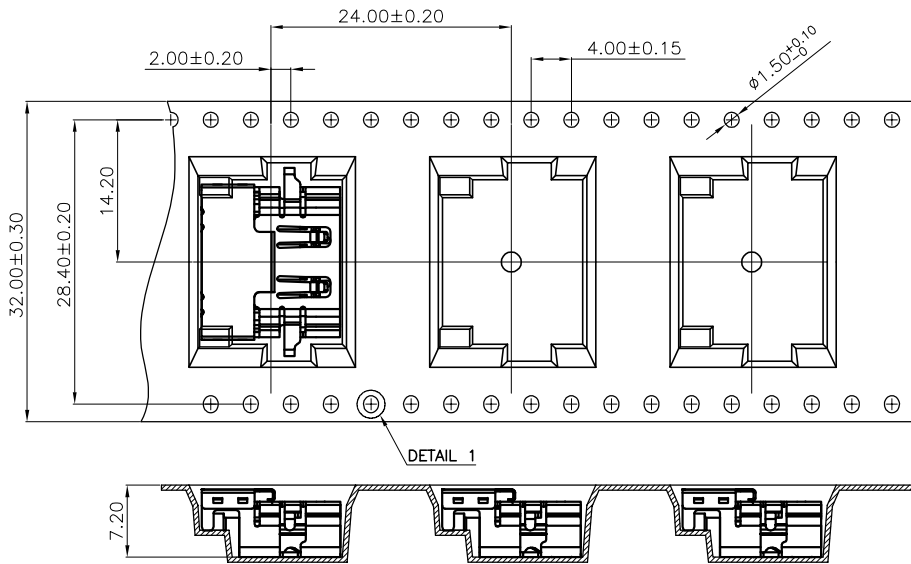


38.4
32.4



- NOTE:
- MATERIAL:
BOX: FIBREBOARD, CORRUGATED, DOUBLE WALL.
TAPE: POLYSTYRENES, WHITE COLOR.
REEL: POLYSTYRENES, BLUE COLOR.
BAG: POLYETHYLENE.
 - PEELING STRENGTH: 0.1 ~ 1.5 N (10 ~ 150 GRAMS)
 - PEELING SPEED: 300 mm/min.
 - EACH BAG SHALL BE INCLUDED DESICCANT.

← GATHER MATERIAL DIRECTION 收料方向
→ INPUT MATERIAL DIRECTION 客户放料方向



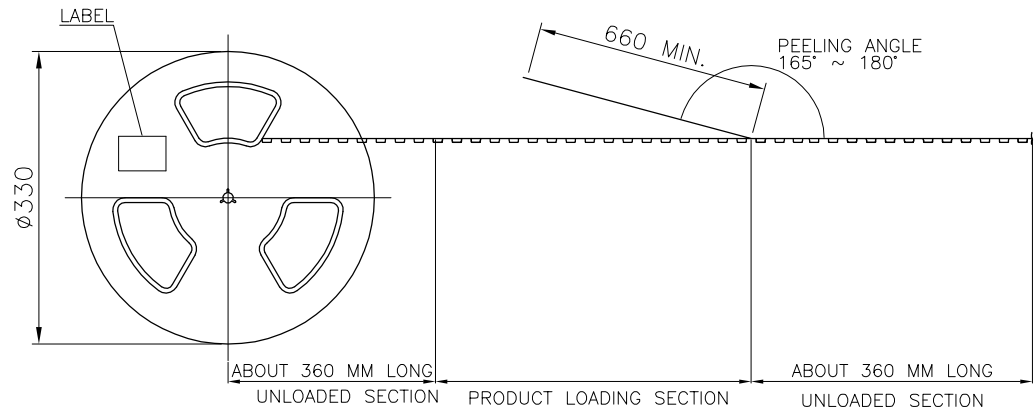
300	10	3000	--KG	--KG
PCS/TAPE	REELS/BOX	QUANTITY	GROSS WEIGHT	NET WEIGHT

REV.	DESCRIPTION	ECN NO.	DWN.	CHK.	APVD.	DATE
03	ADD PACKING P/N	N1801049	Xianpei			02-01'18
02	MODIFY NOTES	N1701025	Hongrui	Jimmy	Kevin	01-17'17
01	FIRST RELEASED	--	Hongrui	Jimmy	Kevin	07-16'16

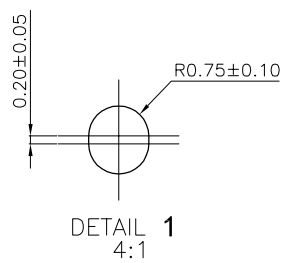
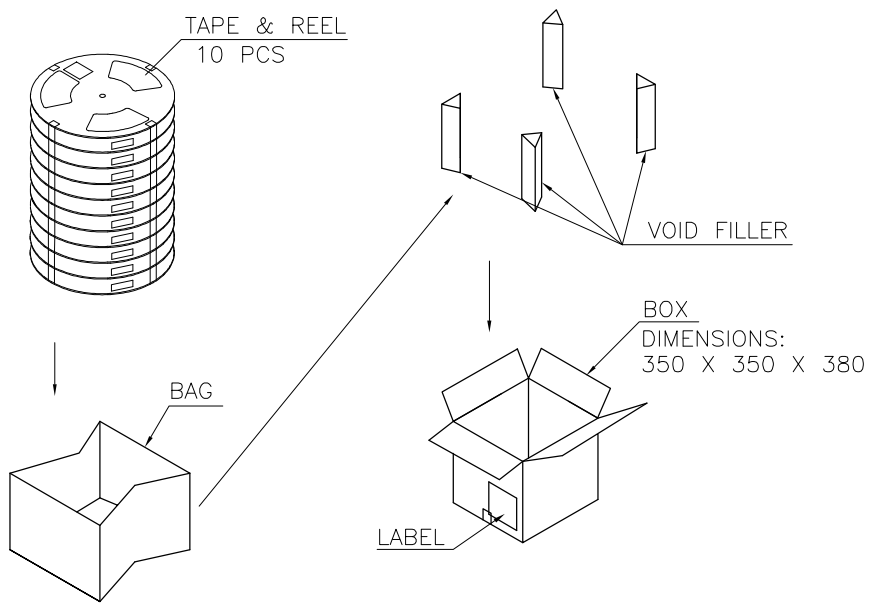
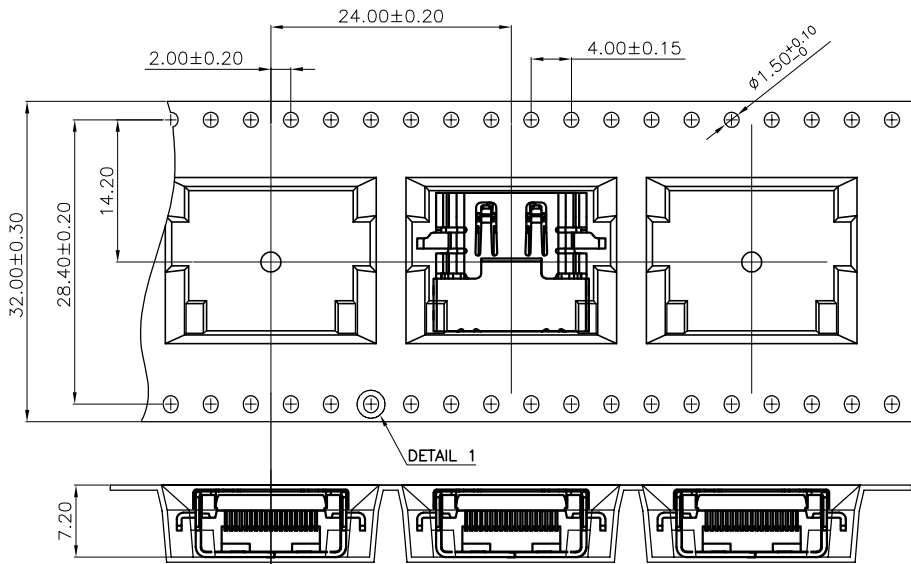
TOLERANCES UNLESS OTHERWISE SPECIFIED
X. ±0.50
X.X ±0.30
X.XX ±0.20
X.XXX ±0.15
ANGEL ±3°
MATERIAL
SEE NOTE
FINISH
SEE NOTE

TITLE	HDMI A TYPE 19PIN H=6.75 CH=-1.18mm REC RVS DIP TYPE(BDC-39)				UNIT	mm
ORIGINAL DATA	07-16'16					
DWN.	Hongrui					
CHK.	Jimmy				PART NO.	SCALE
APVD.	Kevin				SEE TABLE	1 : 1
DWG. NO.		C-16-A190X		SIZE		A3
SHEET		2 OF 3		REV.		03

38.4
32.4



- NOTE:
- MATERIAL:
BOX: FIBREBOARD, CORRUGATED, DOUBLE WALL.
TAPE: POLYSTYRENES, WHITE COLOR.
REEL: POLYSTYRENES, BLUE COLOR.
BAG: POLYETHYLENE.
 - PEELING STRENGTH: 0.1 ~ 1.5 N (10 ~ 150 GRAMS)
 - PEELING SPEED: 300 mm/min.
 - EACH BAG SHALL BE INCLUDED DESICCANT.



300	10	3000	--KG	--KG
PCS/ TAPE	REELS/ BOX	QUANTITY	GROSS WEIGHT	NET WEIGHT

03	ADD PACKING P/N	N1801049	Xianpei		02-01'18	
02	MODIFY NOTES	N1701025	Hongrui	Jimmy	Kevin 01-17'17	
01	FIRST RELEASED	--	Hongrui	Jimmy	Kevin 07-16'16	
REV.	DESCRIPTION	ECN NO.	DWN.	CHK.	APVD.	DATE

TOLERANCES UNLESS OTHERWISE SPECIFIED		TITLE		UNIT
X.	±0.50	HDMI A TYPE 19PIN H=6.75 CH=-1.18mm		mm
X.X	±0.30	REC RVS DIP TYPE(BDC-39)		
X.XX	±0.20	ORIGINAL DATA		
X.XXX	±0.15	07-16'16		
ANGEL	±3°	DWN. Hongrui		
MATERIAL	SEE NOTE	CHK. Jimmy		
FINISH	SEE NOTE	APVD. Kevin		
		PART NO.	SCALE	SIZE
		SEE TABLE	1 : 1	A3
		DWG. NO.	SHEET	
		C-16-A190X	3 OF 3	

D
C
B
A