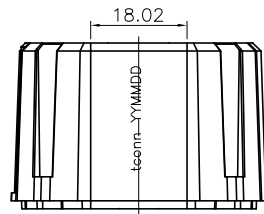
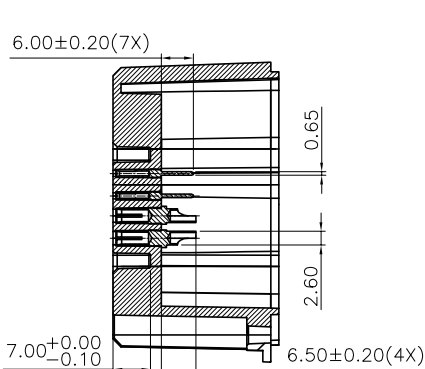
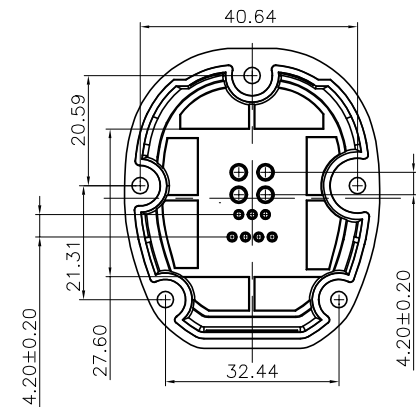
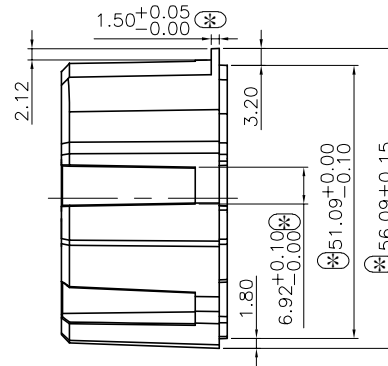
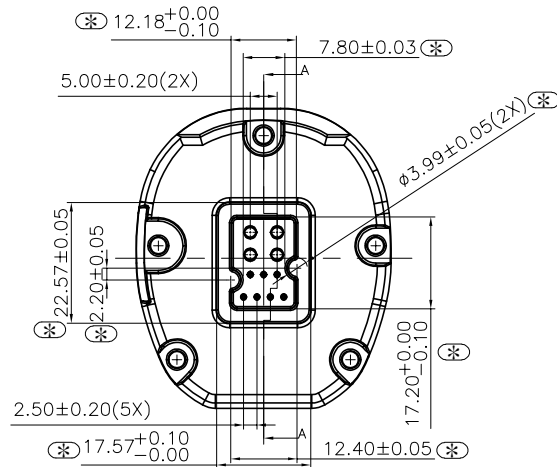
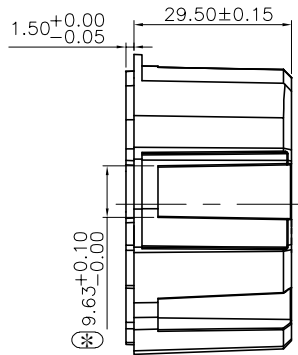
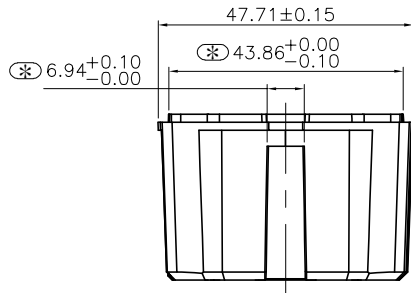
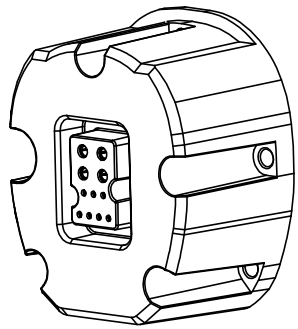


NOTE:

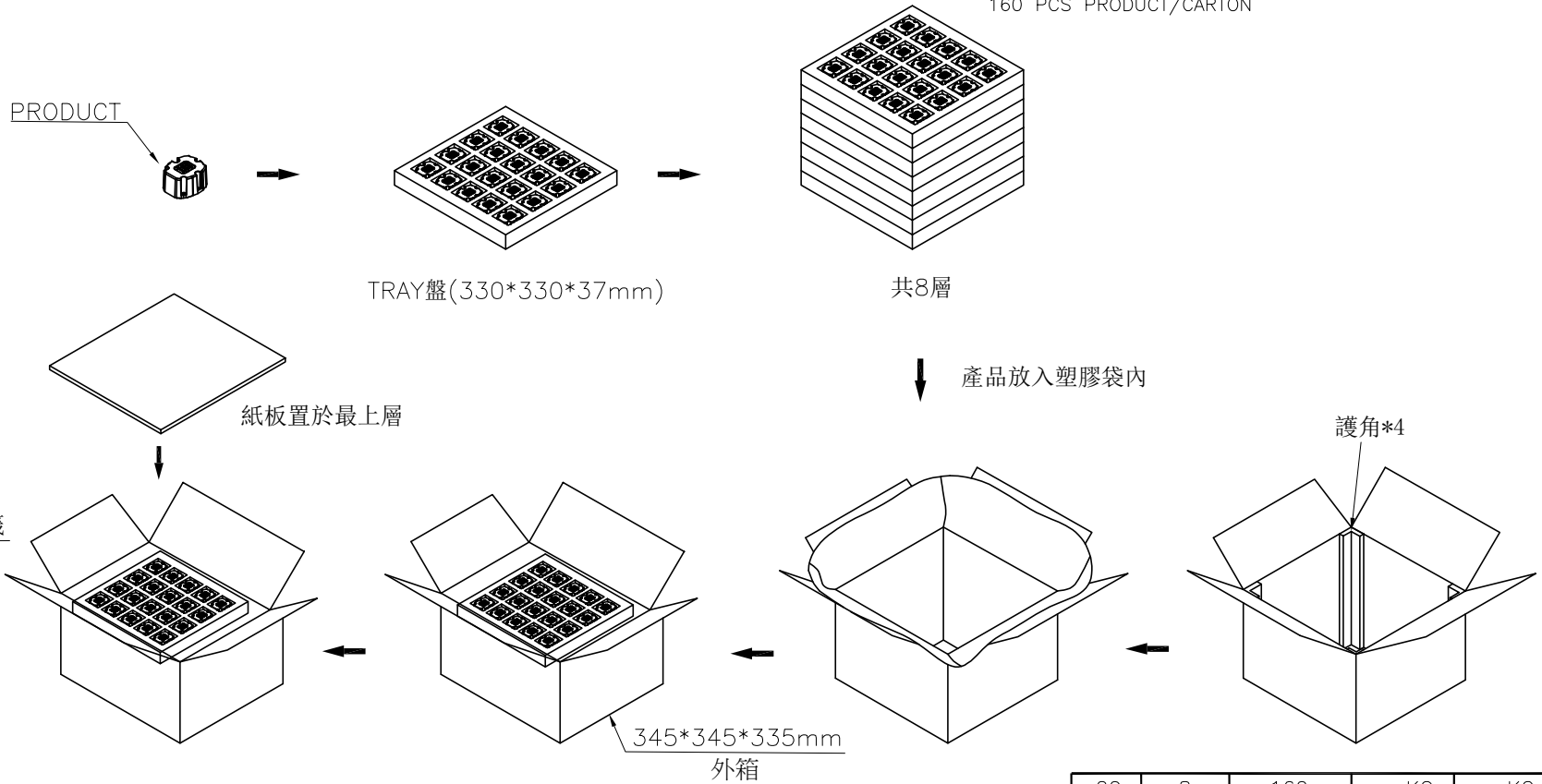
1. ELECTRICAL CHARACTERISTICS :
  - 1-1. CONTACT RESISTANCE : 40mΩ MAX. FOR 7PIN SIGNAL CONTACTS AND 10mΩ MAX. FOR 4PIN POWER CONTACTS
  - 1-2. DIELECTRIC WITHSTANDING VOLTAGE : 1000VAC FOR 1 MINUTE.
  - 1-3. INSULATION RESISTANCE : 500 VDC/100MΩ MAX.
  - 1-4. CONTACT CURRENT RATING : 15A/2A SHALL BE APPLIED TO POWER/SIGNAL PIN.  $\Delta T < 30^{\circ}C$
2. MECHANICAL CHARACTERISTICS :
  - 2-1. INSERTION FORCE : 5KG(Max.)
  - 2-2. EXTRACTION FORCE : 5KG(min.)
  - 2-3. DURABILITY : 100 CYCLES.
  - 2-4. OPERATING TEMPERATURE :  $-40^{\circ}C$  TO  $+85^{\circ}C$ .
3. HOUSING MATERIAL : GN2450, PA9T ; COLOR : BLACK  
CONTACT MATERIAL : COPPER ALLOY
4. PLATING OPTION :  
CONTACT(SIGNAL) : GOLD PLATING 5u" MIN. ON , 50u" MIN. NICKEL UNDERPLATED OVERALL.  
CONTACT(POWER) : GOLD PLATING 20u" MIN. ON , 50u" MIN. NICKEL UNDERPLATED OVERALL.
5. "⊛" SHOWS INSPECTION ITEMS.
6. PRODUCT FLAME RETARDANT LEVEL: UL94-V0.
7. FOR HAND SOLDERING PROCESS.
8. PACKAGING : TRAY.
9. DATE CODE: tconn YYMMDD



| TOLERANCES UNLESS OTHERWISE SPECIFIED |             |         |       |      |          | TITLE                            |                 | UNIT  |      |        |
|---------------------------------------|-------------|---------|-------|------|----------|----------------------------------|-----------------|-------|------|--------|
|                                       |             |         |       |      |          | CONNECTOR BATTERY 4+7 PIN FEMALE |                 | mm    |      |        |
|                                       |             |         |       |      |          | ORIGINAL DATA                    |                 |       |      |        |
|                                       |             |         |       |      |          | 11-13'19                         |                 |       |      |        |
|                                       |             |         |       |      |          | DWN. Kuwei                       |                 |       |      |        |
|                                       |             |         |       |      |          | CHK. --                          |                 |       |      |        |
|                                       |             |         |       |      |          | APVD.                            |                 |       |      |        |
|                                       |             |         |       |      |          | MATERIAL                         |                 |       |      |        |
|                                       |             |         |       |      |          | SEE TABLE                        |                 |       |      |        |
|                                       |             |         |       |      |          | FINISH                           |                 |       |      |        |
|                                       |             |         |       |      |          | SEE TABLE                        |                 |       |      |        |
| 01                                    | NEW DRAWING | --      | Kuwei | --   | 03-18'20 | PART NO.                         |                 | SCALE | SIZE | REV.   |
| REV.                                  | DESCRIPTION | ECN NO. | DWN.  | CHK. | APVD.    | DATE                             | 20-01300-C001-0 | 1:1   | A3   | 01     |
|                                       |             |         |       |      |          |                                  | DWG. NO.        |       |      | SHEET  |
|                                       |             |         |       |      |          |                                  | C-20-0130X      |       |      | 1 of 2 |

NOTE :

1. MATERIAL :  
 BOX : FIBREBOARD, CORRUGATED, DOUBLE WALL.  
 TRAY : EXPANDED POLYETHYLENE FOAM, WHITE COLOR.  
 BAG : POLYETHYLENE,
2. EACH BAG SHALL BE INCLUDED DESICCANT.
3. DIMENSION:  
 TRAY : 330\*330\*37  
 CARTON : L=345,W=345,H=335
4. QUANTITY:  
 20 PCS/TRAY  
 8 PCS TRAYS/CARTON  
 160 PCS PRODUCT/CARTON



|              |               |          |                 |               |
|--------------|---------------|----------|-----------------|---------------|
| 20           | 8             | 160      | --KG            | --KG          |
| PCS/<br>TRAY | TYPES/<br>BOX | QUANTITY | GROSS<br>WEIGHT | NET<br>WEIGHT |

|      |             |         |       |      |       |          |                                       |                                  |      |
|------|-------------|---------|-------|------|-------|----------|---------------------------------------|----------------------------------|------|
|      |             |         |       |      |       |          | TOLERANCES UNLESS OTHERWISE SPECIFIED | TITLE                            | UNIT |
|      |             |         |       |      |       |          | X. ±0.50                              | CONNECTOR BATTERY 4+7 PIN FEMALE | mm   |
|      |             |         |       |      |       |          | X.X ±0.30                             | ORIGINAL DATA                    |      |
|      |             |         |       |      |       |          | X.XX ±0.20                            | 11-13'19                         |      |
|      |             |         |       |      |       |          | X.XXX ±0.15                           | DWN. Kuwei                       |      |
|      |             |         |       |      |       |          | ANGEL ±3°                             | CHK. --                          |      |
|      |             |         |       |      |       |          | MATERIAL                              | APVD.                            |      |
|      |             |         |       |      |       |          | SEE TABLE                             |                                  |      |
| 01   | NEW DRAWING | --      | Kuwei | --   |       | 03-18'20 | FINISH                                |                                  |      |
| REV. | DESCRIPTION | ECN NO. | DWN.  | CHK. | APVD. | DATE     | SEE TABLE                             |                                  |      |

|                         |  |                 |       |      |      |
|-------------------------|--|-----------------|-------|------|------|
| <b>T-CONN PRECISION</b> |  | PART NO.        | SCALE | SIZE | REV. |
|                         |  | 20-01300-C001-0 | 1:1   | A3   | 01   |
| DWG. NO.                |  | SHEET           |       |      |      |
| C-20-0130X              |  | 2 of 2          |       |      |      |